

Accessories

Direct operation handle

SIRCOVER AC I-0-II			
Rating (A)	Handle colour	Handle type	Reference
125 ... 630	Blue	J2 type	1122 1111
125 ... 630	Red	J2 type	1123 1111
800 ... 1800	Blue	J3 type	1132 1111
800 ... 1800	Red	J3 type	1133 1111
2000 ... 3200	Black	S5 type	2799 7042⁽¹⁾

SIRCOVER I - I+II - II			
Rating (A)	Handle colour	Handle type	Reference
125 ... 630	Black	B3 type	4199 5012
800 ... 1800	Black	C1 type	2799 7052

SIRCOVER Bypass			
Rating (A)	Handle colour	Handle type	Reference
125 ... 200	Black	B3 type	4199 5012
250 ... 630	Black	C1 type	2799 7052
800 ... 1600	Black	C2 type	2799 7012⁽¹⁾

(1) Double lever handle



External operation handle

Use

Door interlocked external front operation handles include an escutcheon, are padlockable and must be utilised with an extension shaft.

SIRCOVER AC I-0-II and SIRCOVER I-I+II-II				
Rating (A)	Switching type	External IP ⁽¹⁾	Handle	Reference
125 ... 630	I - 0 - II	IP55	S2 type	1421 2113
125 ... 630	I - 0 - II	IP65	S2 type	1423 2113
125 ... 630	I - I+II - II	IP65	S2 type	1423 2114
800 ... 1800	I - 0 - II	IP65	S4 type	1443 3113⁽²⁾
800 ... 1800	I - I+II - II	IP65	S4 type	1443 3114⁽²⁾
2000 ... 3200	I - 0 - II	IP65	S5 type	1453 8113⁽²⁾

(1) IP : protection degree according to IEC 60529 standard.

(2) Double lever handle.

SIRCOVER Bypass				
Rating (A)	Switching type	External IP ⁽¹⁾	Handle	Reference
125 ... 200	I - 0 - II	IP55	S2 type	1421 2113
125 ... 200	I - 0 - II	IP65	S2 type	1423 2113
250 ... 630	I - 0 - II	IP65	S3 type	1433 3113
800 ... 1600	I - 0 - II	IP65	V2 type	4199 7146

(1) IP : protection degree according to IEC 60529 standard.

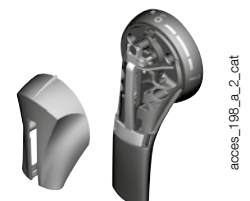


Alternative S-type handle cover colours

Use

For single lever handles S1, S2, S3 type and for double lever handle S4 type.
Other colours: Please consult us.

Colour	To be ordered in multiples of	Handle	Reference
Light grey	50	S2, S3 type	1401 0001
Dark grey	50	S2, S3 type	1401 0011
Light grey	50	S4 type	1401 0031
Dark grey	50	S4 type	1401 0041



S-type handle adapter

Use

Enables S-type handles to be fitted in place of existing older style SOCOMEC handles.
Adapter can also be utilised as a spacer to increase the distance between the panel door and the handle lever.

Dimensions

Adds 12 mm to the depth.

Colour	To be ordered in multiples of	External IP ⁽¹⁾	Reference
Black	1	IP65	1493 0000

(1) IP : protection degree according to IEC 60529 standard.

